

PFAFF
Perfection starts here.™

admire™ air 7000
one-touch air-threading coverlock machine





Create stunning projects with the PFAFF® *admire*™ air 7000 one-touch electronic air-threading coverlock machine. The sophisticated ease-of-use features will help you achieve an expert finish with every stitch.

An Effortless Experience



One-Touch Electronic Air-Threading Loopers

Change threads for different stitches with ease. The PFAFF® *admire*™ air 7000 one-touch electronic air-threading coverlock allows you to effortlessly thread the machine loopers with the simple push of a button.



Color Touchscreen

Select your stitch, and the optimal thread tensions, recommended stitch length, and more are set automatically.



Exceptional Lighting

The 5 LED lights provide exceptional illumination of the sewing area for optimal visibility in any room.

The Right Stitch for Every Project

26 Stitches

The PFAFF® *admire*™ air 7000 one-touch electronic air-threading coverlock machine offers a wide range of stitches for utility and decorative sewing.

Coverstitch

Triple coverstitch and double coverstitch narrow and wide for activewear, hems and decorative applications.

Chainstitch

Seams, basting and decorative applications.

5-Thread Safety Stitch (Wide and Narrow)

A chainstitch and 3-thread overlock for durable, professional seams.

4-Thread Safety Stitch (Wide and Narrow)

A chainstitch and 2-thread narrow or wide overedge for durable seams.

4-Thread Overlock

Seams and seam finishing.

3-Thread Picot Edge

Delicate finish for edges on lightweight fabrics.

3-Thread Overlock (Wide and Narrow)

Seam finishing and decorative edges.

3-Thread Narrow Edge

Fine, narrow hems and edging.

3-Thread Rolled Edge

Rolled hems and edges.

3-Thread Flatlock (Wide and Narrow)

Flat seams and decorative embellishment.

3-Thread Stretch Overlock

Seams on super stretch fabrics.

3-Thread Wrapped Overlock (Wide and Narrow)

Sew seams in stretch fabric.

2-Thread Overlock (Wide and Narrow)

Overcasting for single fabric layer.

2-Thread Wrapped Overlock (Wide and Narrow)

Edge finish for lightweight fabrics.

2-Thread Rolled Edge

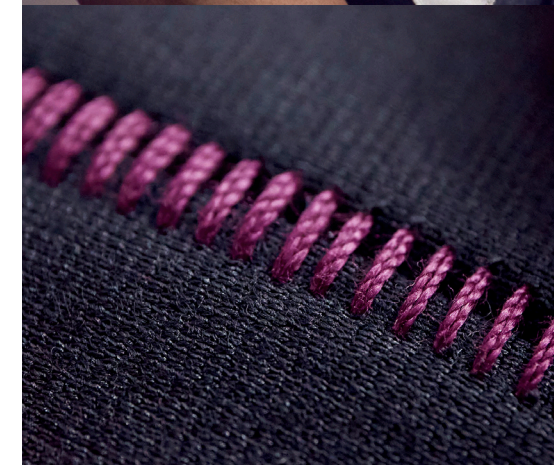
Edging on lightweight fabrics.

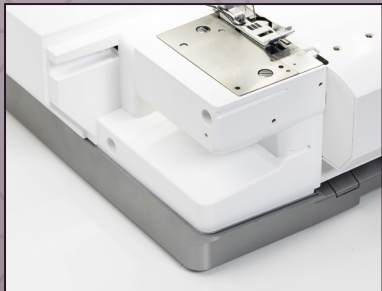
2-Thread Narrow Edge

Fine, narrow hems and edging.

2-Thread Flatlock

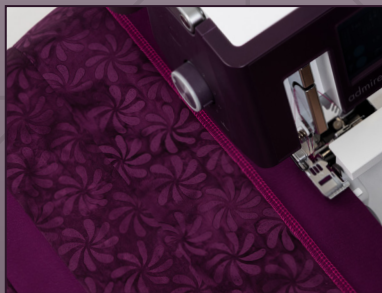
Flat seams and decorative embellishment.





Free Arm

For the smaller projects like cuffs, hems, and children's clothing, the free arm helps you by providing easy access to these types of hard-to-reach areas.



Stability

A reinforced frame makes the PFAFF® *admire*™ air 7000 coverlock stable for all types of sewing, from light to heavyweight — even at top speed.



Extension Table Included

Larger projects are well supported by this sturdy, level surface, which provides an additional 12" (30cm) of work space. In addition, there is a series of evenly spaced pin holes integrated into the table's surface to accommodate the included pivot pin for circular stitching.



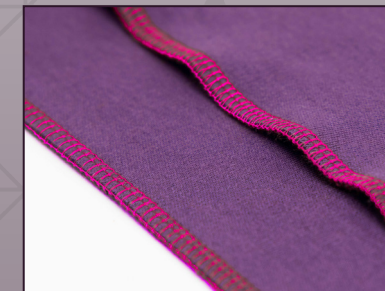
Knee Lift

Use the knee lift to raise and lower the presser foot, allowing you to keep both hands on your project - especially helpful when working with larger projects and difficult-to-handle fabrics.



Stitch Safety Lock

As a safety feature, the PFAFF® *admire*™ air 7000 coverlock will not sew if the front cover is open or if the presser foot is raised. The color touchscreen will display a message to prompt you, as well.



Differential Feed

Perfectly even seams - no stretching or distortion on knits or puckering of finer fabrics. Can also be used for gathering.



Built-in Tweezer and Scissors Holder

Always have your key coverlock tools at hand while you are sewing. Your tweezers and scissors each have a designated holder built in at the top of the thread stand.



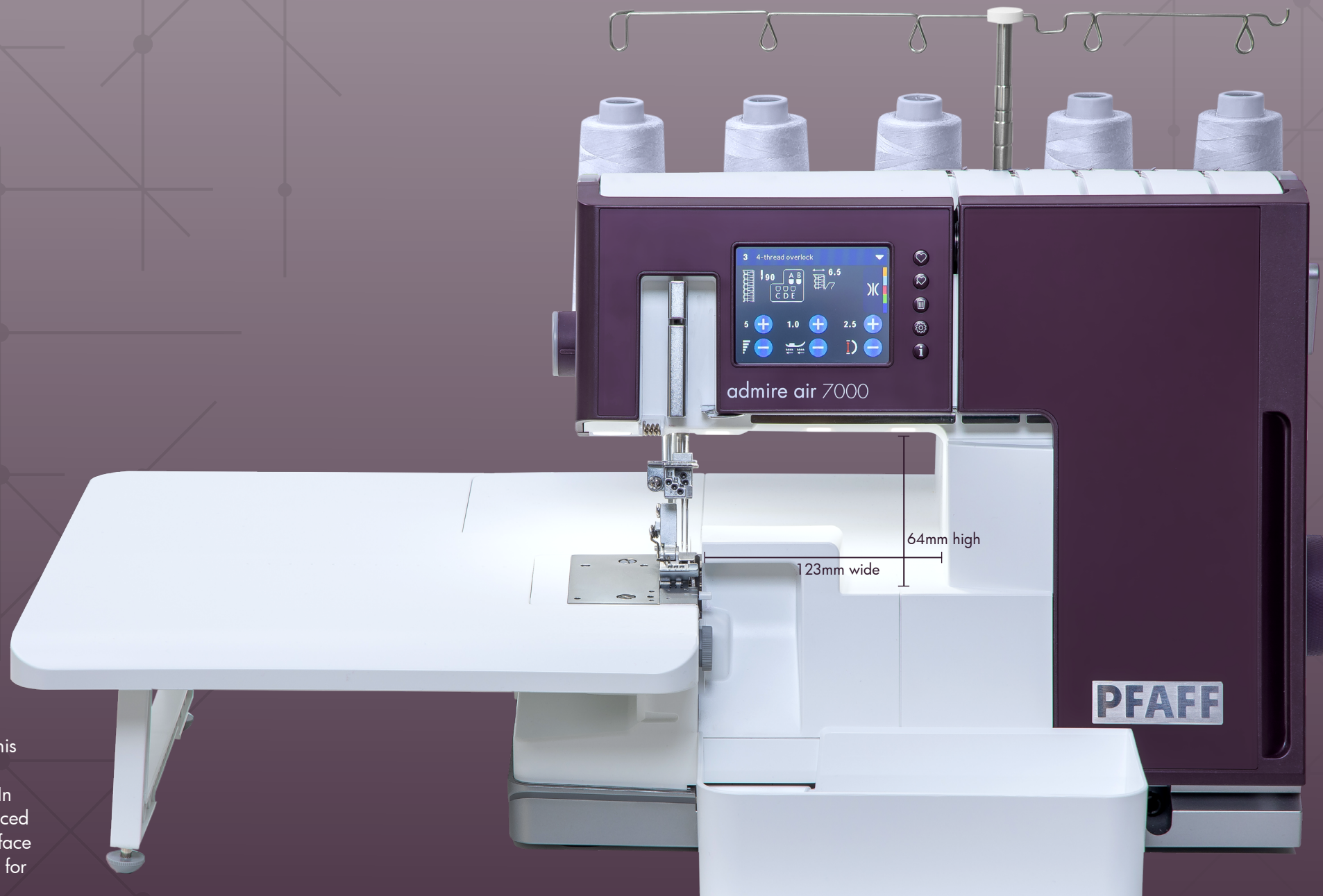
Electronic Piercing Power

Stitch-by-stitch control with full piercing power at all speeds.



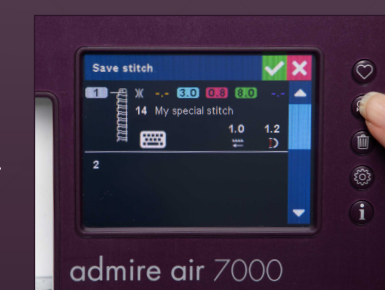
Speed Control

Choose from five different speed settings, allowing you to set your machine's maximum sewing speed as desired, giving you full control.



Stitch Memory

30 stitch memories are available; Select "Save Stitch" to save your personal settings and "Load Stitch" to recall the stitch.





Auto Tension

The PFAFF® *admire*™ air 7000 one-touch electronic air-threading coverlock machine calibrates the thread tension for every stitch automatically, giving you the optimal settings for your selected stitch, yet adjustable if desired.

Built-in 2-Thread Converter

The 2-thread converter is built in to the upper looper and can be quickly and easily moved into position for sewing 2-thread stitches.

Adjustable Presser Foot Pressure

Presser foot pressure can be increased for thicker fabric layers, or decreased for very lightweight fabrics, to ensure smooth fabric feed.

Threading Guides for Wide Range of Thread Types

The threading guides at the top of the machine are designed to accommodate a wide variety of thread types, from regular serger thread to heavier decorative threads.

Adjustable Stitch Length

Stitch length can be set as desired to accommodate various fabric thicknesses as well as a range of sewing techniques.

Adjustable Cutting Width

Whether sewing fine sheers or thick fleece, stitches form neatly at the edge with no excess looping or fabric puckering.

Extra Presser Foot Height

The presser foot has an extra high position, making it easier to sew thicker fabric layers and heavyweight fabrics.

Snap-on Presser Feet

A wide variety of optional presser feet are available to enhance your machine's capability, and they can be attached and removed quickly and easily.

Universal Standard Presser Foot

The Universal Standard Presser Foot that is included with the PFAFF® *admire*™ air 7000 coverlock machine can be used with all the machine's stitches.

Soft-Grip Handwheel

The soft-grip handwheel is comfortable to use while providing maximum, non-slip control.

Tension Release

Tensions release when presser foot is raised for easy thread changing.

Integrated Thread Cutter

Conveniently located on your coverlock machine to quickly trim your thread chain.

Movable Upper Cutter

The upper cutter can be moved out of cutting position for coverstitch sewing, as well as specialty stitch techniques.

Carry Handle

The convenient carry handle extends across the top of the machine and has a comfortable grip for transporting.

Waste Tray

The waste tray catches your excess fabric trimmings and lint as you sew, and it easily snaps on and off the machine for added convenience.



admire™ air 7000

one-touch air-threading coverlock machine

The PFAFF® *admire*™ air 7000 one-touch air-threading coverlock machine has great ease-of-use features and provides beautiful results. With all of the premium capabilities you want in a top-of-the-line coverlock, it's the perfect complement to your sewing machine.



Top Features:

- **One-Touch Electronic Air-Threading Loopers**
Effortlessly thread the machine loopers with the simple push of a button.
- **Color Touchscreen**
View all the information for the stitch you select.
- **Exceptional Lighting**
Exceptional illumination of the sewing area for optimal visibility.
- **Free Arm**
Great for smaller projects like cuffs and hems.
- **26 Stitches**
A wide range of stitches for utility and decorative sewing.
- **Knee Lift**
Raise and lower the presser foot, allowing you to keep your both hands on your project.
- **Auto Tension**
Automatic tension gives you the optimal result for every stitch.
- **Large C-Space**
The C-space is 123mm wide and 64mm high.
- **Stitch Memory**
Save personal stitch settings for future use.
- **Speed Control**
Set the maximum speed as desired.
- **Built-in 2-Thread Converter**
Fast and easy conversion to 2-thread sewing mode.
- **Differential Feed**
Perfectly even seams with no distortion.

Included Accessories:

- Spool Holders
- Spool Caps
- Thread Nets
- Tweezer
- Needle Threader
- Allen Key
- Screw Driver
- Lint Brush
- Sewing Machine Oil
- Knife Blade For Upper Cutter
- Stylus
- Coverstitch Table B
- Knee Lifter
- Accessory Storage Box
- Threading Wire
- Foot Control
- Waste Tray
- Soft Dust Cover
- Pack Of Needles
- Extension Table
- Pivot Pin for Circular Stitching

Optional Accessories:

- Corded Wavy Edge Foot
- Elastic Foot
- Blind Hem and Lace Foot
- Piping Foot
- Beading Foot
- Gathering Foot
- Taping Foot
- Clear Coverstitch Foot
- Flat Trim Foot
- Join and Fold Edging Foot
- Strap and Belt Loop Foot
- Piping Foot with Corded Guide
- Coverstitch Binder
- Coverstitch Hemmer
- Overlock Feet Kit (Gathering, Elastic, Blind Hem, Piping, Taping)
- Coverstitch Feet Kit (Clear Coverstitch, Flat Trim, Join and Fold Edging, Strap and Belt Loop, Piping with Cording Guide)